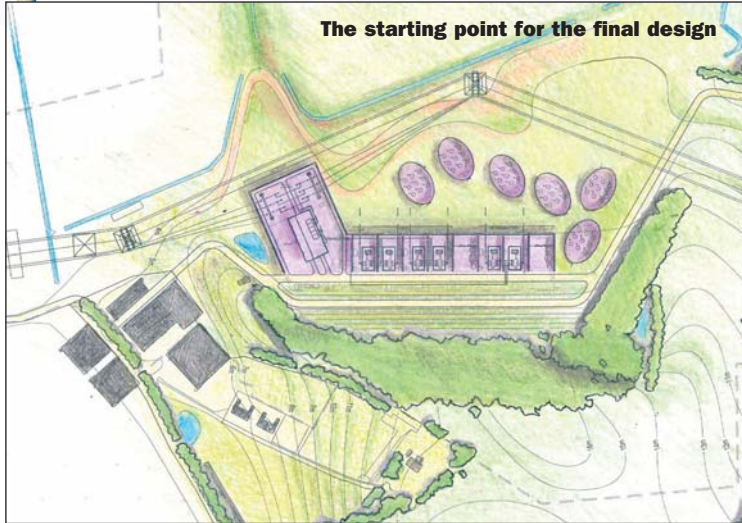


London Array



Newsletter

SEPTEMBER 2007



As things stand...

The decision by the Secretary of State for Communities and Local Government in consultation with the Secretary of State for Business, Enterprise and Regulatory Reform to grant planning permission for the London Array substation at Cleve Hill brings an end to a long period of uncertainty for all of us.

While opponents of the scheme are bound to be disappointed at the outcome, I hope we can all agree that the Public Inquiry provided the right forum in



which views and opinions could be openly expressed and heard and an impartial judgement reached.

Our focus now will be to bring the project to fruition in ways which cause the least disruption to, and the maximum benefits for, the local community.

Although there are many details still to be finalised, this newsletter aims to give residents in Graveney with Goodnestone an idea of what will be happening in coming months. We will keep you updated as the project progresses and will also be in close touch with the Parish Council.

If you would like any more information please do not hesitate to get in touch. Contact details are on the back page.

Richard Rigg
Consents and Commercial
Manager, London Array

Ministers decide on substation

THE granting of consent on 22 August for the substation at Cleve Hill followed a positive recommendation from the Inspector who presided over the Public Inquiry held in March this year.

In reaching his conclusions, David Rose noted that: "The principle of seeking to avoid large scale intrusive development in the countryside carries considerable force; and the quest for an alternative brownfield, more urban-related or better concealed site has considerable attraction. However, there is no justifiable basis to suppose that any other realistically

feasible and suitable site exists to accommodate the proposed substation." The Inspector's report also addressed the concerns that had been raised about construction traffic, concluding: "Whilst I have taken full account of the lengthy nature of the construction phase, and I do not doubt that some residents will be aware of the works through increased traffic movements, particularly during concentrated periods of activity, I have reached the conclusion that the quality of life of local residents would not be harmed to a material degree."

"A design solution fitted to its setting."

Mr Rose also turned his attention to the design of the substation. In line with the opinions expressed by GREAT, he rejected the original design put forward by London Array "for not achieving the necessary design quality" but went on to praise the revised design that arose from the architectural competition proposed by Swale Borough Council as "a design solution fitted to its setting."



feasible and suitable site exists to accommodate the proposed substation." The Inspector's report also addressed the concerns that had been raised about



What happens next: in the short term

Before any work begins on the substation, National Grid will carry out work to realign three pylons in the area. This will allow London Array's substation to be constructed on Cleve Hill and, once completed, to be connected to the electricity transmission system. National Grid has arranged this work to take advantage of its planned refurbishment works on the overhead line between Kemsley and Canterbury as part of its national investment programme.

National Grid is expected to begin preparatory work in December. The company will be hosting a public exhibition on 18 October to inform the local community about its work and invites will be sent to homes in the area in due course.



National Grid has set up a free helpline that can be contacted on 0800 0217877. National Grid will continue to work closely with London Array in order to coordinate activities and to minimise any unnecessary disruption.



What happens next: London Array's longer term timelines

Now that we have onshore planning permission, we will be focusing on the tendering process.

This will cover all aspects of the project from the substation to the turbines.

The contractors' responses will have a significant impact on the timing of the rest of the project.

We are, for example, reliant on a number of specialist contractors for some elements of the project and if they have limited availability it will affect our schedules. However, assuming there are no major upsets we would expect the following outline timetable:

- Autumn 2007: Main wind farm and substation tenders issued
- Winter 2007/8: National Grid work begins
- Spring 2008: Main wind farm and substation contractors chosen
- Late 2008: Final Investment Decision
- Late 2008: Work starts on Graveney substation
- 2009: Work begins on first phase of wind farm



Our commitment to

Consultation with the local community and Swale Borough Council during the planning process showed construction traffic was a key concern.

London Array pledged to minimise the impact of this traffic and commitments made last year are now formally part of our planning consent.

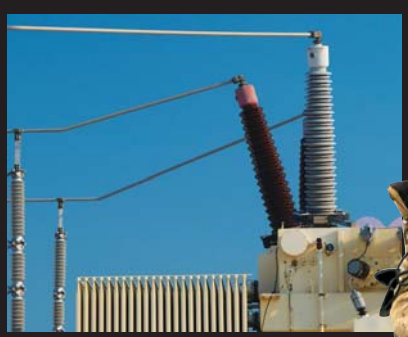
The package of measures we signed up to will be included in a legally-enforceable Traffic Management Plan drawn up with Swale Borough Council and Kent Highways, and discussed with the Parish Council and Graveney Primary School. If we fail to live up to our commitments, Swale Borough Council will be able to take enforcement action. This could even include stopping all construction activity.

The key commitments are:

- To impose a strict 20mph HGV speed limit on London Array contractors in the vicinity of Graveney Primary School. The speed limit will be independently monitored.
- HGVs will not leave the Cleve Hill site during school drop-off and pick-up times (8.30am – 9.30am and 3.00pm – 4.00pm) and we will refuse HGV deliveries of bulk materials before 9.30am.
- To fund the installation of a controlled crossing between the school and the playing field.
- To provide a car park with safe pedestrian access to the school (this is subject to obtaining the land and any necessary consents).
- To pay for a traffic marshal, to be employed

UP TO 341 TURBINES... WORLD'S LARGEST OFFSHORE WIND FARM... 12 MILES OFF THE HOMES... POTENTIAL TO PREVENT THE RELEASE OF ABOUT 1.5M TONNES OF CARBON DIOXIDE





New potential for the local economy... London Array will be a major infrastructure project offering significant opportunities for local businesses



you during substation construction

by Kent County Council. Although, strictly speaking, this condition only applies once work on the actual substation begins, this funding will be made available as soon as National Grid starts work on construction of the temporary access road needed for the overhead line diversion.

We will also:

- Oblige contractors to use only approved routes to the site
- Provide sufficient on-site parking for all vehicles
- Ensure deliveries arrive in covered vehicles

- Regularly sweep the roads near the site entrance
- Make sure lorry wheels are washed before leaving the site

Arrangements for local liaison involving representatives of the Parish Council, London Array, the school and other interested parties will be set up. Discussions to formalise the arrangements have already started with the Parish Council.

National Grid has agreed to follow a similar code of conduct.

Substation brings community benefits

As mentioned in the newsletter that was circulated to Graveney with Goodnestone residents in December 2006, London Array will put in place a community benefits package once we start building the substation, which is not expected to be before autumn 2008.

It will provide funds for the community, local environmental enhancements, an offer to provide a village car park for the school (as part of the Traffic Management Plan detailed above) and educational grants. The total value is some £850,000.

The component elements are:

- A £300,000 Community Fund, administered independently of London Array.
- A £200,000 Conservation Enhancement Fund for nature conservation within the parish.
- An annual donation of £2,000, index-linked, for 10 years to provide extra-curricular activities related to sustainable development to each of Graveney Primary School, Abbey School, Faversham and Queen Elizabeth Grammar School, Faversham.
- A three-year bursary for one local student in tertiary education every year for ten years.
- Subject to obtaining the necessary consents, London Array plans to purchase the plot of land to the south east of the railway bridge and donate this land to the Parish Council on condition that it is available to Graveney Primary School as a car park for as long as the school wishes.

Keeping the lines open

London Array is committed to keeping the local community fully informed about its activities with regards to the substation.

As well as maintaining ongoing communication with Graveney with Goodnestone Parish Council - a meeting has been arranged for 4 October - and Graveney Primary School, we will be issuing further letters and newsletters as our plans progress next year.

We will also be making it as easy as possible for residents to contact us should there be issues that they would like us to address. Once we begin work on the substation, for example, the contact details of senior site staff will be publicly available. We will also keep the website updated with relevant information.

- *The Parish Council has said it would welcome feedback from local residents ahead of its regular meeting on 8 October.*



Opportunities for local businesses

The London Array offshore wind farm is one of the largest infrastructure projects currently under consideration in Kent.

The Graveney substation on its own is a considerable engineering project.

The London Array project team is determined that significant economic benefits will flow to the local economy from this work. Swale companies are well placed to pick up work relating to the substation and we have had longstanding discussions with organisations such as Locate in Kent and Business Link Kent to help make sure that this happens.

For example, in addition to construction skills, we are likely to require contractors who can supply fencing, catering, aggregates, cleaning, accommodation, transport and security.

Longer term, though, once work begins on the offshore element of the wind farm, there are possibly even larger opportunities that will be available to the business community, not just in Ramsgate, our preferred choice for the wind farm's operations and maintenance, but right across East Kent.



Climate change: why we need the wind in our sails

SINCE London Array first submitted its plans for the Graveney substation in 2005, the need to combat climate change and to produce more electricity from renewable sources has become ever more urgent.

In recognition of this, the 27 nations of the European Union agreed in March 2007 to a legally-binding target of 20 per cent of all energy to be supplied from renewable sources by 2020. This reflects the UK's own target of 15 per cent by 2015 and its aspiration to increase to 20 per cent by 2020.

And an even greater role for renewable energy will be required if the UK is to achieve its goal of a 60 per cent reduction in carbon dioxide emissions by 2050.

As well as helping combat climate change, increasing the amount of energy generated by renewable sources increases the diversity and hence the security of supply.

For the foreseeable future, wind power is likely to contribute the lion's share of renewable electricity. It is a mature technology that is cost-competitive with conventional power generation.

It is also particularly suited to the UK, which is endowed with one of the best wind regimes in the world and is estimated to have at least one third of the entire EU wind resource.

The Thames Estuary is Europe's lead area for wind power and London Array is at the forefront of the energy revolution that is taking place off Kent's coast.

HAVE
YOUR SAY:
CONTACT DETAILS
BELOW



If you would like further information about London Array, please visit www.londonarray.com or write to Richard Rigg, Consents and Commercial Manager, London Array Limited, 10th Floor, No. 11 Elizabeth House, York Road, London SE1 7NZ.