



Notice of Operation Export Cable operations within the Swale Channel

Date of Notice	28th October 2011
----------------	-------------------

Please be advised that London Array will be carrying out Export Cable pull in operations within the inter-tidal area of the Swale Channel, off the onshore Cleve Hill substation, as indicated by the chartlet below.

On completion of the pull in operations the cable lay vessel Stemat Spirit will commence cable lay operations from the Swale Channel towards the offshore Substation 1, situated within the London Array Wind farm construction zone.

Timeline of operations All dates subject to weather and operational delays!

The mobilisation of vessels Wiltango and the barges Willcarry 432 and Willcarry 300 to the Cleve Hill Substation site in the Swale Channel has already taken place, and they will assist in the pull in operations of the export cable within the intertidal zone.

The mobilisation of up to 6 Semi rigid inflatable boats (RIBs), is presently taking place. These vessels will be utilised as **guide vessels to assist leisure craft to pass by the anchor pattern of the Stemat Spirit, whilst in the Swale channel, and for general assistance duties.**

Friday 28th October

The tug Coastal Vanguard, with the assistance of the multicat MPR2 will tow the barge Stemat 77 from Chatham Docks to an anchor position in Margate Roads.

The cable lay vessel Stemat Spirit is due to arrive at Margate Roads late Friday 28th October.

Saturday 29th October

Early morning - Transfer of equipment from the barge Stemat 77 to the Stemat Spirit

Midday - The MPR2 will tow the barge Stemat 77 to a mooring anchor off the Cleve Hill substation.

Saturday 29th October / Sunday 30th October.

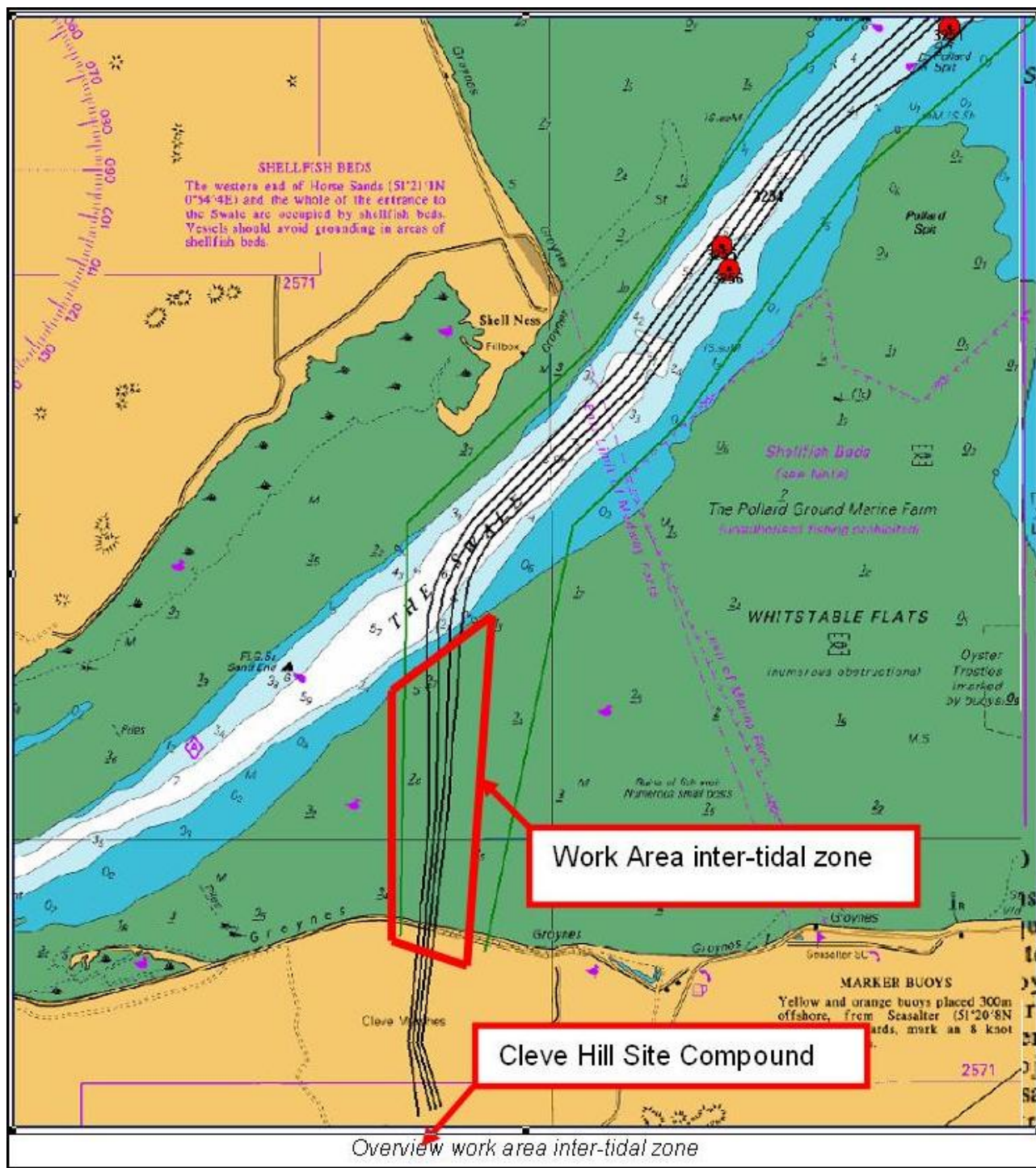
The Stemat Spirit will proceed to the Swale channel off the Cleve Hill site, and with the assistance of the MPR2 and the Coastal Vanguard lay the anchor pattern.

Monday 31st October to Saturday 5th November.




Export cable pull in operations within the intertidal zone off the Cleve Hill substation.

Saturday 5th November

The Stemat Spirit will commence laying the export cable towards the offshore Substation 1.



Principle vessels involved in operations

 <p>Stemat Spirit</p>	<p>Cable lay vessel</p> <p>Dimensions: L 90m x B 28m x D 4.7m</p> <p>Call Sign - PBSO</p>
 <p>MPR2</p>	<p>Multicat - General purpose vessel</p> <p>Anchor handler for Stemat Spirit</p> <p>Dimensions: L 26.5m x B 11m x D 2.7m</p> <p>Call Sign - PBQL</p>
 <p>Coastal Vanguard</p>	<p>Tug - Towage duties for barge Stemat 77</p> <p>Anchor Handler for Stemat Spirit</p> <p>Dimensions: L 32.3m x B 9.3m x 3.2m</p> <p>Call Sign - PCFH</p>



Wiltango

Multicat - General purpose vessel

Assist tug for Barges Willcarry 342/300

Dimensions: L 15.5m x 6m x 0.8m

Call Sign - 2CFW6



RIB's

RIB's - Guide vessels

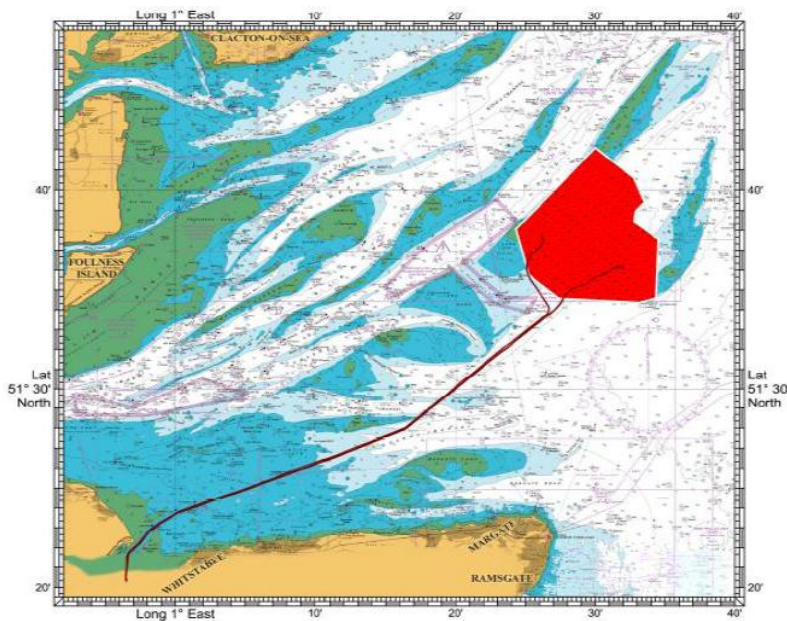
General purpose.

Dimensions:

6.8m-8.8m x 2.7m x 0.5m

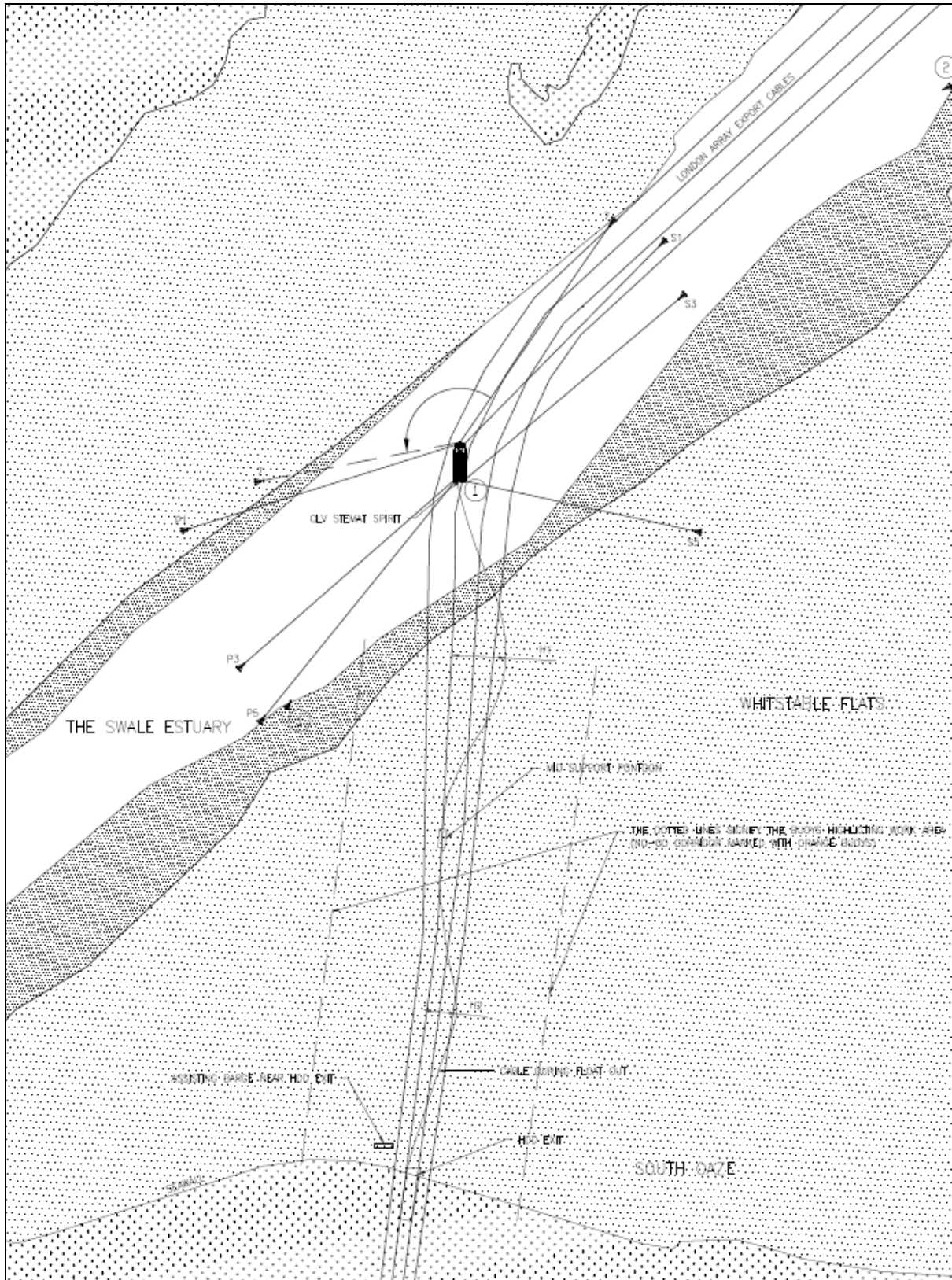
All of the vessels will exhibit the lights and shapes required by the 'Collision Regulations'. The vessel will always be contactable during operations on VHF channel 16. Regular safety information will be broadcast on VHF.

Export Cable Route



Construction Zone Boundary		
ID	Latitude	Longitude
1	51° 38.03' N	001° 24.60' E
2	51° 38.06' N	001° 25.33' E
3	51° 38.82' N	001° 26.47' E
4	51° 39.05' N	001° 26.05' E
5	51° 41.90' N	001° 30.04' E
6	51° 40.52' N	001° 33.00' E
7	51° 39.65' N	001° 32.88' E
8	51° 39.42' N	001° 33.30' E
9	51° 38.61' N	001° 32.16' E
10	51° 37.45' N	001° 34.29' E
11	51° 34.90' N	001° 33.71' E
12	51° 34.68' N	001° 34.14' E
13	51° 34.50' N	001° 33.14' E
14	51° 34.71' N	001° 27.46' E
15	51° 35.82' N	001° 25.40' E
16	51° 38.03' N	001° 24.60' E

Anchor Pattern of Stemat Spirit, during cable pull.
While laying cable the anchors will be moved continuously as the Stemat Spirit moves ahead



Any Question regarding this Notice to Mariners should be directed to London Array Marine Coordinators Office.

Notice Issued by :

Marine Coordinator
London Array Ltd.

Email : londonarraytraffic@dongenergy.dk
Phone : +44 (0) 7920854358
Web site : www.londonarray.com