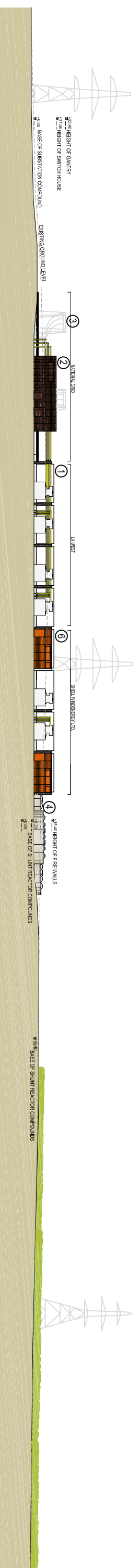




SECTION D-D
View through substation facing south at Year 5



SECTION C-C
View through substation facing north at Year 5

-  Proposed native woodland tree planting
-  Proposed native shrub/woodland edge planting

- ① Transformers
- ② 400kV GIS building
- ③ Gantry
- ④ Shunt reactor compounds
- ⑤ Sculpted landform
- ⑥ Auxiliary services enclosure

LONDON ARRAY ONSHORE SUBSTATION
UPDATED DESIGN - AS OPTIMISED

SITE SECTIONS II
FIGURE 8 - 883/PL/008
1:2000 @ A3
21 NOVEMBER 2006