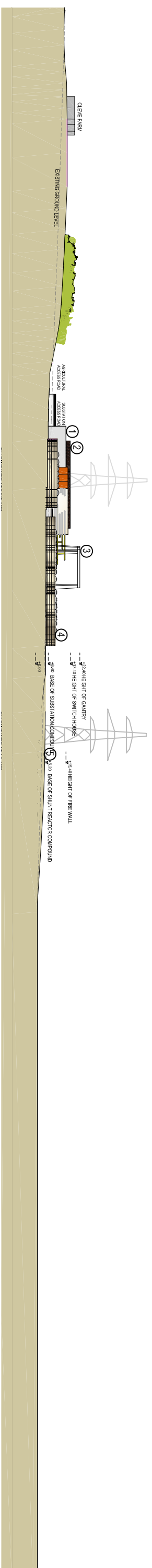




SECTION B-B

View through substation facing east at Year 5



SECTION A-A

View through substation facing west at Year 5

-  Proposed native woodland tree planting
 -  Proposed native shrub/woodland edge planting
- ① Transformers
 - ② 400kV GIS building
 - ③ Gantry
 - ④ Shunt reactor compounds
 - ⑤ Sculpted landform

LONDON ARRAY ONSHORE SUBSTATION
UPDATED DESIGN - AS OPTIMISED

SITE SECTIONS 1
FIGURE 7 - 883(PL)007
1:2000 @ A3
21 NOVEMBER 2006