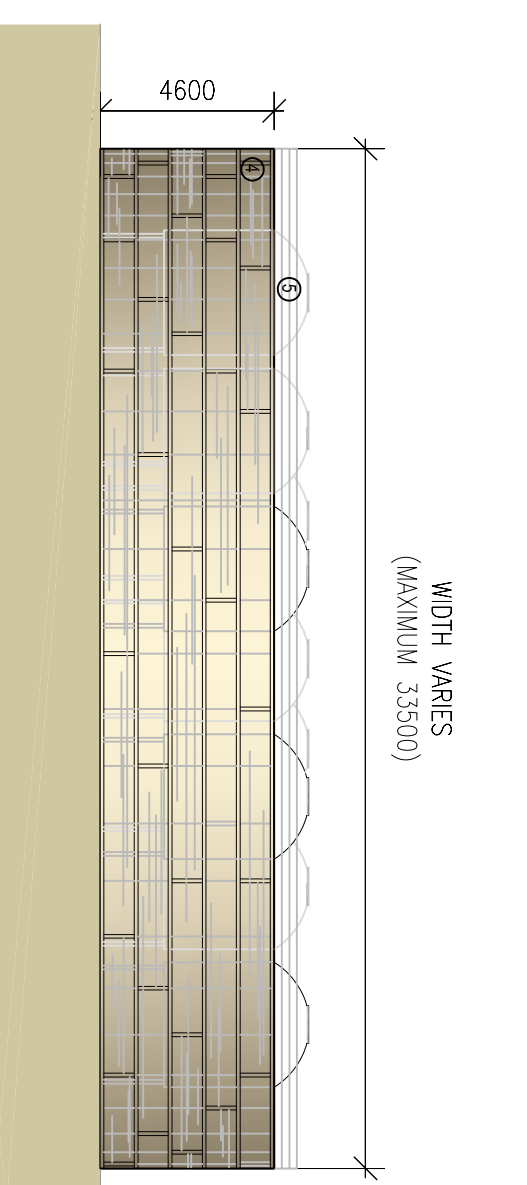
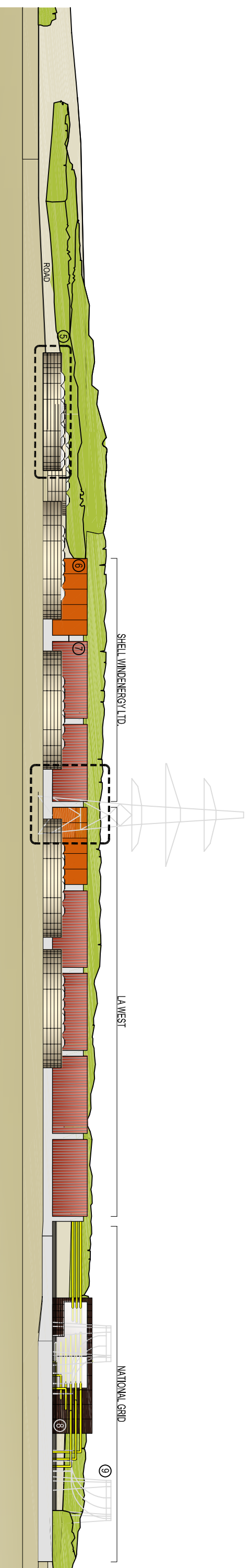


DETAIL OF FACADE  
1:200 @ A3



DETAIL OF SHUNT REACTOR ENCLOSURES  
1:200 @ A3



NORTH ELEVATION  
1:1000 @ A3

- ① Steel panels, dark coloured matte finish
- ② Light coloured in situ concrete
- ③ Pivoting panels, movement linked to wind speed
- ④ One face coloured, one face reflective
- ⑤ Final design and specification to be approved by architect
- ⑥ Architectural mesh panels fixed to steel skeleton
- ⑦ Mesh specification / panel design to meet security requirements
- ⑧ Final details to be approved by architect

- ⑤ Shunt reactors
- ⑥ Auxiliary services module
- ⑦ Transformer module
- ⑧ 400kV GIS building
- ⑨ Gantry

\*All planting shown at year 5

**LONDON ARRAY ONSHORE SUBSTATION**  
UPDATED DESIGN - AS OPTIMISED

NORTH ELEVATION  
FIGURE 2 - 883(PL)002

21 NOVEMBER 2006