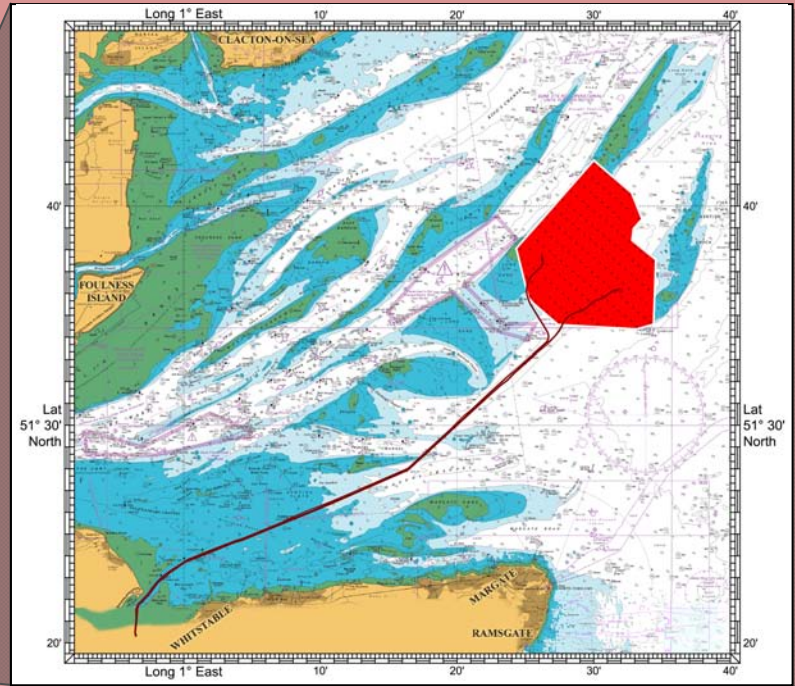




London Array Offshore Wind Farm

- Construction Activities -



Construction Activities

London Array is located around 20km from the Kent and Essex coasts in the outer Thames Estuary. The first 630MW phase consists of 175 turbines and two offshore substations. Phase One will be connected by four undersea cables from the offshore substations to a new onshore substation at Cleve Hill, on the north Kent coast. Construction on Phase One will begin in early 2011 and is scheduled to be complete by the end of 2012. Further build is then dependent on further environmental studies.

Key Programme Dates

Dates	Activity	Vessels
February 2011 – April 2012	Foundation Installation	MPI Adventure and Sea Worker
July 2011 and April 2012	Export Cable Installation	Stemat Spirit
July 2011	Installation of offshore substations	Rambiz
July 2011	Array cable installation	Stemat Spirit and Stemat 82
November 2011	Turbine Installation	MPI Adventure and Sea Worker

Plus numerous tugboats, crew boats, survey and other vessels

Safety Zones

During the construction phase of the wind farm, an application has been submitted for Safety Zones around installation vessels and installed structures. These include a 500m Safety Zone around all installation vessels and a 50m Safety Zone around each turbine and substation structure upon installation. All vessels are requested to respect the Safety Zones which as well as reducing the risk of collision damage will provide protection to the installation vessels, the export cables and the wind turbine structures.

Vessels

Construction vessels will exhibit the appropriate signals for day and night. Some vessels may have anchors and cables extending out to 500m and possibly be using diving services. Various tugs and barges will be in the vicinity of the construction site and may be restricted in their ability to manoeuvre. Crew boats will be transporting members of the workforce to and from Ramsgate and other ports within the estuary and other construction vessels will be transiting between the wind farm and ports within the estuary. Photos of the vessels involved in the wind farm construction, can be seen on the reverse of this flyer.

Contact Details

Fisheries Liaison Officer

Kurt Jensen

Tel: +44 (0)207 152 4626, Emergency: +44 (0) 845 3014712

London Array Marine Coordinators

Duty Marine Coordinator

Mob: +44 (0)7920 854358, Email: londonarraytraffic@dongenergy.dk

London Array Website – www.londonarray.com



Kingfisher Awareness Chart



Proposed London Array Offshore Wind Farm

FIELD LAYOUT LEGEND

- Wind Turbine (Not To Scale)
- Wind Turbine with Navigation & Aviation Light (Not To Scale) (FI Y 5s - range 5 nautical miles)
- Wind Turbine with Navigation & Aviation Light (Not To Scale) (FI Y 2.5s - range 2 nautical miles)
- Wind Turbine with Navigation & Aviation Light (Not To Scale) (FI Y 2.5s - range 5 nautical miles)
- Inter Array Cable
- Export Power Cable
- Consented Wind Farm Boundary
- Sub Station (Not To Scale)
- Met Mast (Not To Scale)
- Fog Signal (Mo(U) 30s)
- Wave Buoys (FI (5) Y 20s - range 2 nautical miles)

WGS 84 Spheroid - Satellite Datum
WOULD SKIPPERS PLEASE PLOT COORDINATES INTO THEIR FISHING PLOTTERS OR ELECTRONIC CHARTS
COORDINATE COMPATIBLE WITH GPS SYSTEMS

Lat 51° 40' North

Lat 51° 40' North

25'

Long 1° 30' East

35'

25'

Long 1° 30' East

35'

Met Mast

Sub Station 1

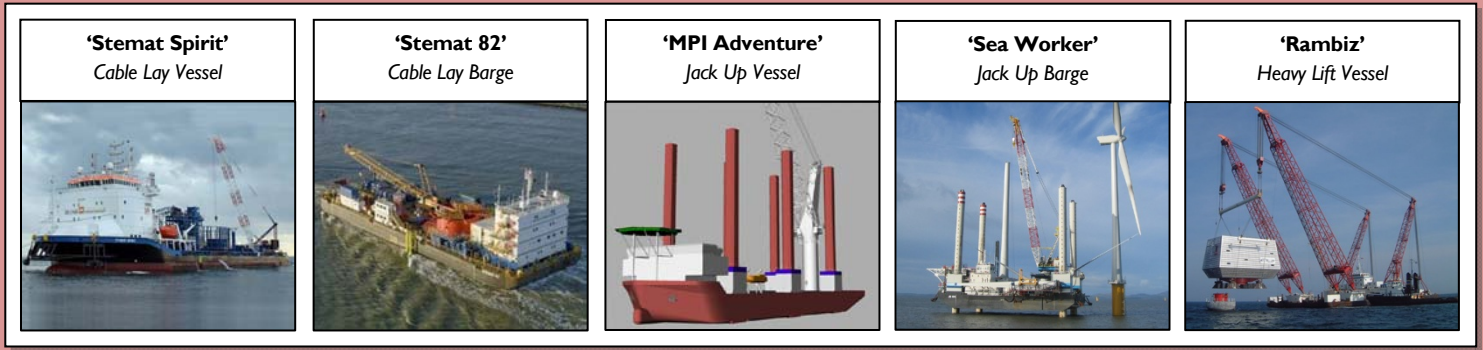
Sub Station 2

NOT TO BE USED FOR NAVIGATION

IMPORTANT

During construction, foundations and turbines will exhibit FI Y 2.5s 2nm

Examples of Vessels Involved



Wind Farm Coordinates

Phase I Proposed Export Cable Routes				Phase I Turbine Positions											
Substation 1		Substation 2		N°		Position		N°		Position		N°		Position	
Export Cable 1		Export Cable 1		N°		Position		N°		Position		N°		Position	
N°	Position	N°	Position	N°	Position	N°	Position	N°	Position	N°	Position	N°	Position	N°	Position
01.	51°20.298'N 00°56.460'E	01.	51°20.317'N 00°56.530'E	E17	51°37.953'N 01°26.757'E	I06	51°37.051'N 01°33.723'E								
02.	51°20.486'N 00°56.417'E	02.	51°20.486'N 00°56.454'E	E18	51°38.183'N 01°26.331'E	I07	51°37.281'N 01°33.297'E								
03.	51°21.068'N 00°56.503'E	03.	51°21.492'N 00°56.588'E	E19	51°38.413'N 01°25.904'E	I08	51°37.511'N 01°32.871'E								
04.	51°21.583'N 00°56.505'E	04.	51°21.713'N 00°56.668'E	F01	51°34.679'N 01°34.142'E	I09	51°37.741'N 01°32.447'E								
05.	51°21.808'N 00°56.676'E	05.	51°22.309'N 00°57.542'E	F02	51°34.909'N 01°33.716'E	I10	51°37.971'N 01°32.020'E								
06.	51°22.269'N 00°57.383'E	06.	51°22.793'N 00°58.120'E	F03	51°35.139'N 01°33.290'E	I11	51°38.201'N 01°31.594'E								
07.	51°22.824'N 00°58.052'E	07.	51°23.225'N 00°58.922'E	F04	51°35.369'N 01°32.864'E	I12	51°38.431'N 01°31.168'E								
08.	51°23.349'N 00°59.071'E	08.	51°23.734'N 01°00.157'E	F05	51°35.599'N 01°32.438'E	I13	51°38.661'N 01°30.742'E								
09.	51°23.832'N 01°00.286'E	09.	51°24.626'N 01°03.676'E	F06	51°35.829'N 01°32.012'E	I14	51°38.892'N 01°30.316'E								
10.	51°24.717'N 01°03.839'E	10.	51°24.746'N 01°04.325'E	F07	51°36.059'N 01°31.586'E	I15	51°39.122'N 01°29.890'E								
11.	51°25.249'N 01°06.035'E	11.	51°27.172'N 01°13.558'E	F08	51°36.289'N 01°31.161'E	I16	51°39.352'N 01°29.464'E								
12.	51°26.147'N 01°09.326'E	12.	51°28.002'N 01°16.460'E	F09	51°36.519'N 01°30.735'E	I17	51°39.582'N 01°29.038'E								
13.	51°27.311'N 01°13.787'E	13.	51°31.906'N 01°23.312'E	F10	51°36.750'N 01°30.309'E	I18	51°39.812'N 01°28.612'E								
14.	51°28.067'N 01°16.475'E	14.	51°32.058'N 01°23.645'E	F11	51°36.980'N 01°29.883'E	I19	51°40.042'N 01°28.186'E								
15.	51°30.101'N 01°19.959'E	15.	51°34.040'N 01°27.124'E	F12	51°37.210'N 01°29.457'E	I20	51°40.272'N 01°27.760'E								
16.	51°30.561'N 01°20.743'E	16.	51°34.476'N 01°27.603'E	F13	51°37.440'N 01°29.031'E	J06	51°37.458'N 01°34.293'E								
17.	51°32.623'N 01°24.417'E	17.	51°34.731'N 01°27.803'E	F14	51°37.670'N 01°28.605'E	J07	51°37.688'N 01°33.868'E								
18.	51°33.820'N 01°26.565'E	18.	51°34.909'N 01°28.040'E	F15	51°37.900'N 01°28.179'E	J08	51°37.918'N 01°33.442'E								
19.	51°33.977'N 01°26.667'E	19.	51°35.061'N 01°28.360'E	F16	51°38.130'N 01°27.753'E	J09	51°38.149'N 01°33.019'E								
20.	51°34.234'N 01°26.595'E	20.	51°35.215'N 01°29.063'E	F17	51°38.360'N 01°27.327'E	J10	51°38.380'N 01°32.593'E								
21.	51°35.553'N 01°25.299'E	21.	51°35.448'N 01°29.619'E	F18	51°38.590'N 01°26.901'E	J11	51°38.610'N 01°32.167'E								
22.	51°35.927'N 01°25.098'E	22.	51°35.691'N 01°30.135'E	F19	51°38.820'N 01°26.475'E	J12	51°38.840'N 01°31.741'E								
23.	51°36.153'N 01°25.062'E	23.	51°35.880'N 01°30.844'E	F20	51°39.051'N 01°26.048'E	J13	51°39.070'N 01°31.315'E								
24.	51°36.366'N 01°25.086'E	24.	51°36.166'N 01°31.498'E	G03	51°35.546'N 01°33.860'E	J14	51°39.300'N 01°30.889'E								
25.	51°36.559'N 01°25.181'E	25.	51°36.197'N 01°31.965'E	G04	51°35.776'N 01°33.434'E	J15	51°39.530'N 01°30.463'E								
26.	51°36.801'N 01°25.416'E	26.	51°36.149'N 01°32.082'E	G05	51°36.006'N 01°33.008'E	J16	51°39.760'N 01°30.037'E								
27.	51°37.231'N 01°26.117'E			G06	51°36.236'N 01°32.582'E	J17	51°39.990'N 01°29.611'E								
28.	51°37.432'N 01°26.260'E			G07	51°36.466'N 01°32.157'E	J18	51°40.220'N 01°29.185'E								
29.	51°37.601'N 01°26.237'E			G08	51°36.697'N 01°31.731'E	J19	51°40.450'N 01°28.759'E								
30.	51°37.765'N 01°26.182'E			G09	51°36.927'N 01°31.306'E	J20	51°40.681'N 01°28.332'E								
31.	51°37.814'N 01°26.208'E			G10	51°37.157'N 01°30.879'E	K11	51°39.017'N 01°32.736'E								
				G11	51°37.387'N 01°30.453'E	K12	51°39.247'N 01°32.311'E								
				G12	51°37.617'N 01°30.027'E	K13	51°39.477'N 01°31.885'E								
				G13	51°37.847'N 01°29.601'E	K14	51°39.707'N 01°31.458'E								
				G14	51°38.077'N 01°29.175'E	K15	51°39.937'N 01°31.033'E								
				G15	51°38.307'N 01°28.749'E	K16	51°40.167'N 01°30.607'E								
				G16	51°38.537'N 01°28.323'E	K17	51°40.398'N 01°30.180'E								
				G17	51°38.767'N 01°27.897'E	K18	51°40.628'N 01°29.754'E								
				G18	51°38.998'N 01°27.471'E	K19	51°40.858'N 01°29.328'E								
				G19	51°39.228'N 01°27.045'E	K20	51°41.088'N 01°28.902'E								
				G20	51°39.458'N 01°26.619'E	L11	51°39.424'N 01°33.306'E								
				H04	51°36.183'N 01°34.005'E	L12	51°39.654'N 01°32.880'E								
				H05	51°36.413'N 01°33.579'E	L13	51°39.884'N 01°32.454'E								
				H06	51°36.644'N 01°33.153'E	L14	51°40.114'N 01°32.029'E								
				H07	51°36.874'N 01°32.727'E	L15	51°40.345'N 01°31.602'E								
				H08	51°37.104'N 01°32.301'E	L16	51°40.575'N 01°31.176'E								
				H09	51°37.334'N 01°31.876'E	L17	51°40.805'N 01°30.750'E								
				H10	51°37.564'N 01°31.450'E	L18	51°41.035'N 01°30.324'E								
				H11	51°37.794'N 01°31.024'E	L19	51°41.265'N 01°29.898'E								
				H12	51°38.024'N 01°30.598'E	L20	51°41.495'N 01°29.472'E								
				H13	51°38.254'N 01°30.172'E	M14	51°40.522'N 01°32.599'E								
				H14	51°38.484'N 01°29.746'E	M15	51°40.752'N 01°32.173'E								
				H15	51°38.714'N 01°29.320'E	M16	51°40.982'N 01°31.747'E								
				H16	51°38.945'N 01°28.894'E	M17	51°41.212'N 01°31.320'E								
				H17	51°39.175'N 01°28.468'E	M18	51°41.442'N 01°30.894'E								
				H18	51°39.405'N 01°28.042'E	M19	51°41.672'N 01°30.468'E								
				H19	51°39.635'N 01°27.615'E	M20	51°41.902'N 01°30.042'E								
				H20	51°39.865'N 01°27.189'E										
				I05	51°36.821'N 01°34.149'E										

Consented Wind Farm Boundary (Phase I and 2)				Buoys	
N°	Position	N°	Position	N°	Position
A.	51°36.264'N 01°20.954'E	F.	51°42.036'N 01°33.348'E	1.	51°37.075'N 01°30.388'E
B.	51°39.732'N 01°26.849'E	G.	51°42.018'N 01°39.950'E	2.	51°34.800'N 01°23.500'E
C.	51°42.144'N 01°30.116'E	H.	51°39.312'N 01°39.950'E	3.	51°35.000'N 01°30.000'E
D.	51°45.606'N 01°33.650'E	I.	51°34.092'N 01°34.294'E		
E.	51°45.042'N 01°38.044'E	J.	51°34.878'N 01°23.254'E		

Met Mast		Phase I Sub Stations	
1.	51°35.640'N 01°23.138'E	1.	51°37.864'N 01°26.259'E
		2.	51°36.148'N 01°32.084'E